

# Akaya

by TRASACCO



TRASACCO  
30 Year Legacy

# Trasacco Group

The Trasacco Group, founded over 50 years ago by Baron Ernesto Taricone, is a diversified conglomerate operating across agriculture, manufacturing, hospitality, construction, and real estate development. Through its subsidiaries, the Group has delivered some of Ghana's most iconic commercial and residential landmarks, setting new benchmarks for quality and innovation.

Today, the Group employs over 3,500 people and generates an annual turnover exceeding US\$60 million. Trasacco Properties, its dedicated real estate division, continues this legacy by creating visionary developments that blend architectural excellence with enduring value.



# Trasacco Properties Ltd

## Your Trusted Development Partner

Trasacco Properties Ltd undertakes residential developments on behalf of the Trasacco Group, and is currently promoting and delivering landmark projects including Akaya, Trasacco Park, and The Haven.

Building on the Group's extensive land holdings, combined with decades of knowledge and expertise from previous developments, our goal is clear: to position Trasacco Properties Ltd as one of the leading residential developers in Ghana. We specialise across the housing spectrum, from affordable to mid-range to high-end, community-focused estates, while upholding our family tradition of delivering exceptional quality and long-term value.

### **Micheletti & Co - Building Excellence over 50 years**

Micheletti & Co., a subsidiary of the Trasacco Group, is one of Ghana's most respected civil engineering and construction companies, with over five decades of proven expertise in Accra. As the appointed contractor for **Akaya**, they bring unmatched technical capability, reliability, and craftsmanship to the project.

### **Landmark projects delivered by the Group include:**

- Villaggio Primavera
- Villaggio Vista
- Trasacco Springs
- Adinkra Heights
- Trasacco Valley Estate
- IFC Office for World Bank
- One Airport Square
- Bank of Ghana Head Office
- Fidelity Bank Head Office
- MTN Regional Office
- Multichoice Head Office

Trusted partners for delivering world-class real estate.

# Redefining the Urban Lifestyle

Akaya spans 28 acres in the northern corridor of the city, nestled within the thriving middle-income community of Pantang. Here, urban sophistication blends seamlessly with an inviting suburban setting. Elegant architecture, modern interiors, and functional layouts come together to create an inspiring living environment for discerning residents. Akaya is more than a development, it is a vibrant, well-rounded neighbourhood with recreational and social facilities that rival the best gated communities in Accra.

Our development team has collaborated with award-winning architects and interior designers to craft exceptional two, three, and four bedroom homes. Every detail has been carefully considered to deliver both comfort and style, tailored to meet the diverse needs of our clients.

At the heart of Akaya lies a green sanctuary, a large central park featuring the clubhouse and a wealth of amenities, set within lush landscaped surroundings that encourage outdoor living. Smaller landscaped parks throughout the estate further enrich the community, offering residents additional open spaces to relax, connect, and thrive.















# Ahead of it's Time

Akaya is a truly exclusive estate, accessed directly from Pantang Abokobi Road and less than 1 km from the N4 highway for quick access into the city. Nothing in the area compares.

Choose from elegant 2 bedroom apartments or spacious 3 and 4 bedroom townhomes, each thoughtfully designed with modern finishes, contemporary facades, private gardens, balconies or roof terraces, and vibrant street frontages.

At the heart of the estate lies the lofty clubhouse, offering an extensive array of lifestyle amenities:

- Resident's Lounge and Event Space
- Board and Meeting Rooms
- Private Screening Room (Theatre)
- Fully Fitted Gym and Changing Rooms
- Outdoor Swimming Pool
- Multi-Sports Court and Padel Tennis
- Children's Play Areas
- Landscaped gardens within the central park

Akaya combines sophisticated living with open green spaces, creating a vibrant community where your best life begins in a home that inspires.

# Flawless Landscape Design

Akaya has been masterfully planned with generous green spaces woven throughout the community. Beautifully landscaped gardens, rich with vibrant flora and fauna, provide a sense of harmony and calm across the estate.

At its heart lies the expansive central park, a lush sanctuary designed with flowing foliage that offers shade, tranquillity, and moments of escape. Complementing this are smaller landscaped pockets that bring variety and charm as residents move from one space to another.

Dedicated zones integrate thoughtfully designed play areas for children, as well as sports and recreation facilities, ensuring every member of the community can enjoy the outdoors in a way that enriches daily life.















# A Modern Sanctuary

Akaya has been masterfully planned to provide both convenience and seclusion within a managed residential estate. Exceptional architecture, world-class amenities, and beautifully landscaped green spaces create an exclusive environment for families. With thoughtfully designed modern homes, Akaya offers refined comfort and understated luxury, tailored for today's lifestyle.

---

## Stunning Architecture

A seamless fusion of nature and contemporary design, each Akaya residence embraces its lush surroundings while offering privacy, security, and serenity.

# Modern Living

Every home at Akaya is designed to celebrate both indoor and outdoor living. Expansive open-plan layouts seamlessly connect kitchens, dining, and living areas to private gardens, creating inviting spaces for entertaining and relaxation.

The kitchens feature elegant countertops, breakfast bars, built-in appliances, and custom cabinetry—crafted to be as functional as they are stylish. Generous bedrooms come with built-in or walk-in wardrobes, while bathrooms are fitted with bespoke vanities and premium finishes for a refined touch.

---

## Apartments

Discover our thoughtfully designed 2 bedroom apartments, each offering a seamless blend of indoor and outdoor living. Ground-floor residences feature generous private gardens, while first and second-floor apartments are enhanced with spacious balconies and private rooftop terraces.

---

## Townhomes

Choose from beautifully designed three or four bedroom townhomes, each combining contemporary amenities with thoughtful details to provide comfort, convenience, and luxury living tailored for modern families.




















# Two Bedroom Apartments

115.5m<sup>2</sup> / 1,243 sq. ft.

-  2 Bedrooms
-  2.5 Bathrooms
-  2 Car Park

Enjoy bright, open-plan living spaces that flow naturally into private outdoor areas, whether it's a garden retreat, a sunlit balcony, or a rooftop deck. Every home is crafted to create a perfect harmony between comfort, functionality and modern design.

## HIGHLIGHTS

- Ground-floor apartments include private gardens of up to 120 m<sup>2</sup>.
- First and second-floor apartments enjoy expansive private rooftop terraces.

A home designed for those who value elegance, flexibility, and connection to the outdoors.

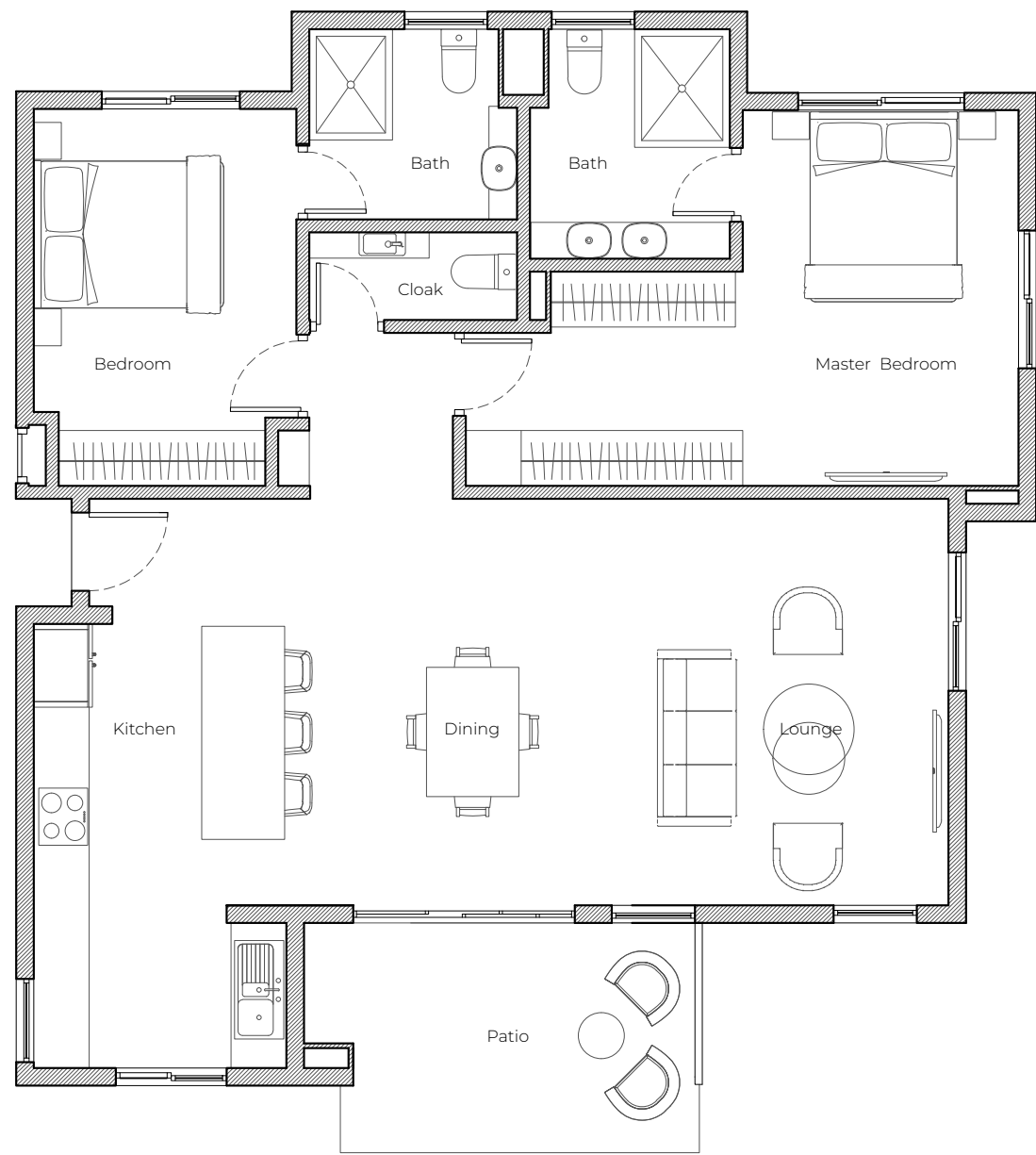








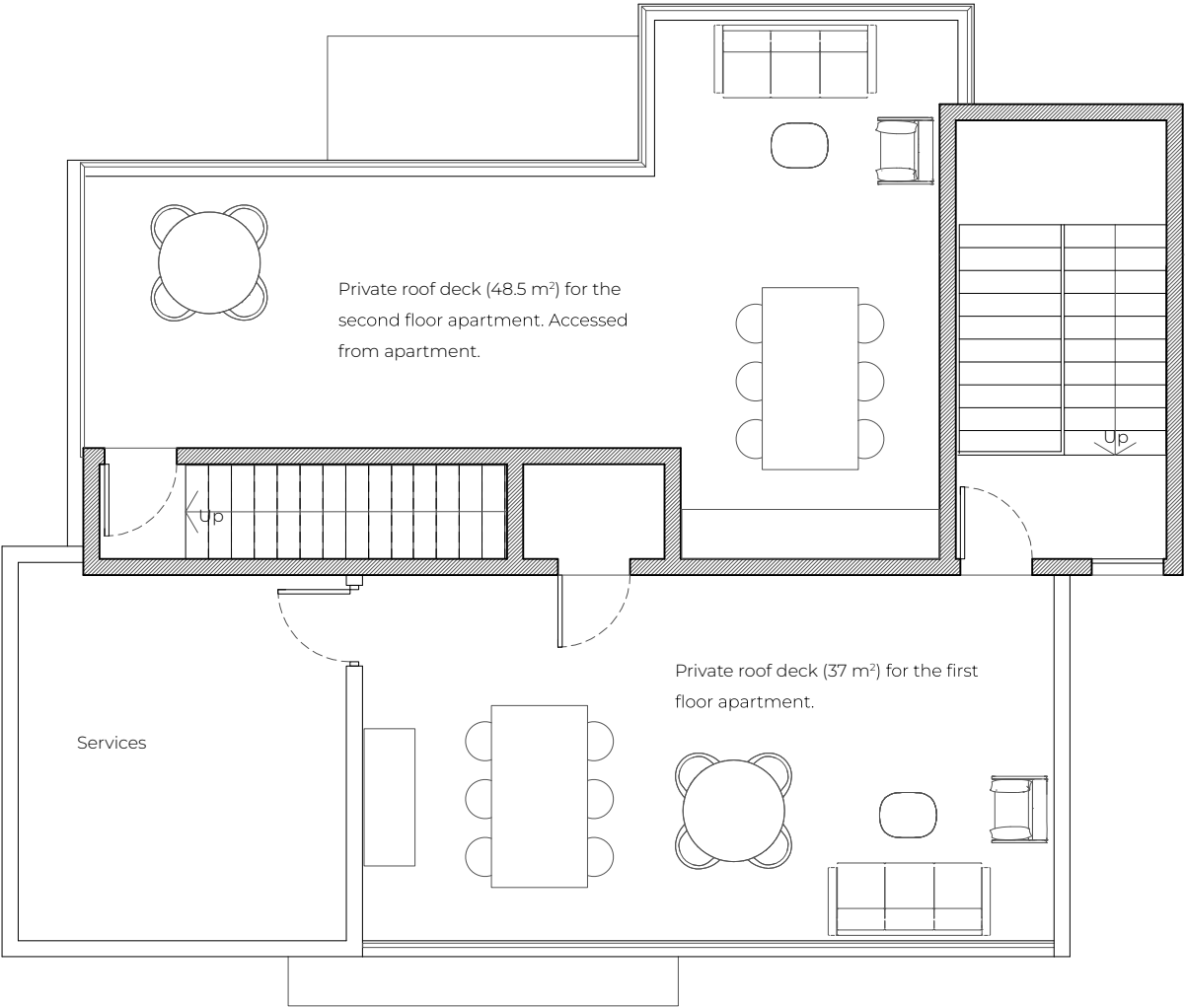
TWO BEDROOM APARTMENTS (115.5m²)



Typical Floor Plan



TWO BEDROOM APARTMENTS - ROOF TERRACES



Roof Terraces for First and Second Floor Apartments












# Three Bedroom Townhomes

176m<sup>2</sup> / 1,894 sq. ft.

-  3 Bedrooms
-  2.5 Bathrooms
-  2 Car Park

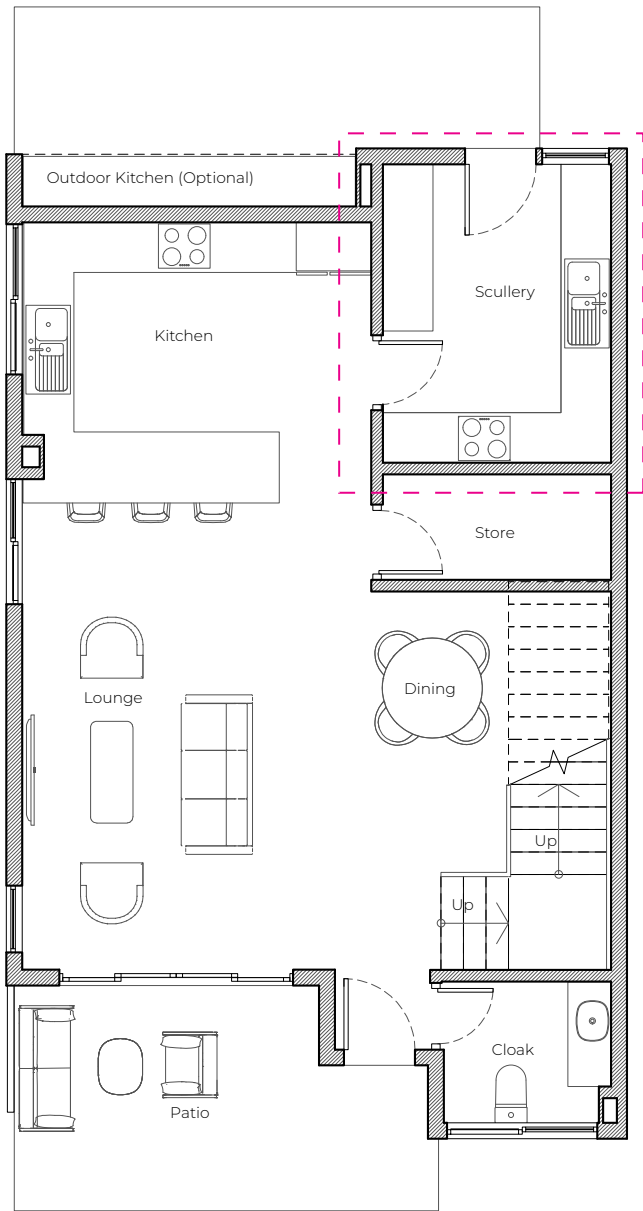
An extraordinary modern home designed with expansive living spaces wrapped around a private garden, creating harmony between indoor comfort and the beauty of nature.

For added convenience, each home offers the option of either a second kitchen (Scullery) or Domestic Staff Quarters (DSQ), complete with en-suite bathroom and a dedicated rear access door leading directly to the kitchen.

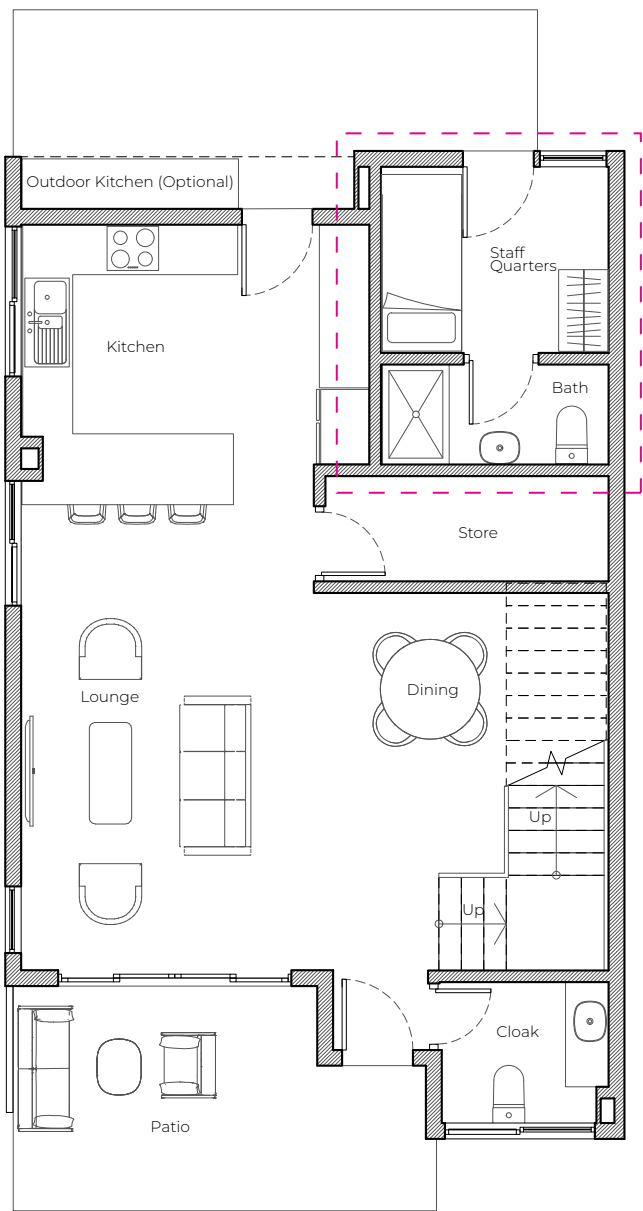
Enjoy unmatched value with private gardens up to **50% larger than competing developments**, redefining outdoor living, exclusivity, and space for your family.



THREE BEDROOM TOWNHOMES (176m<sup>2</sup>)



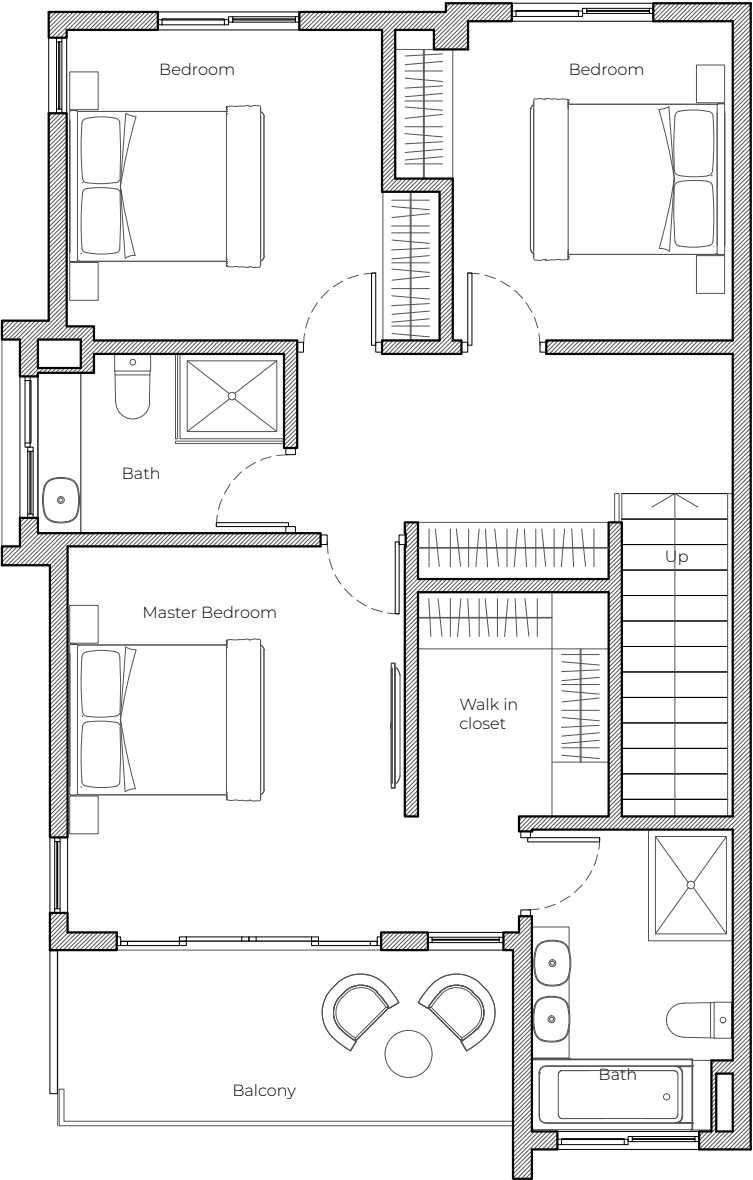
Ground Floor (with Scullery)



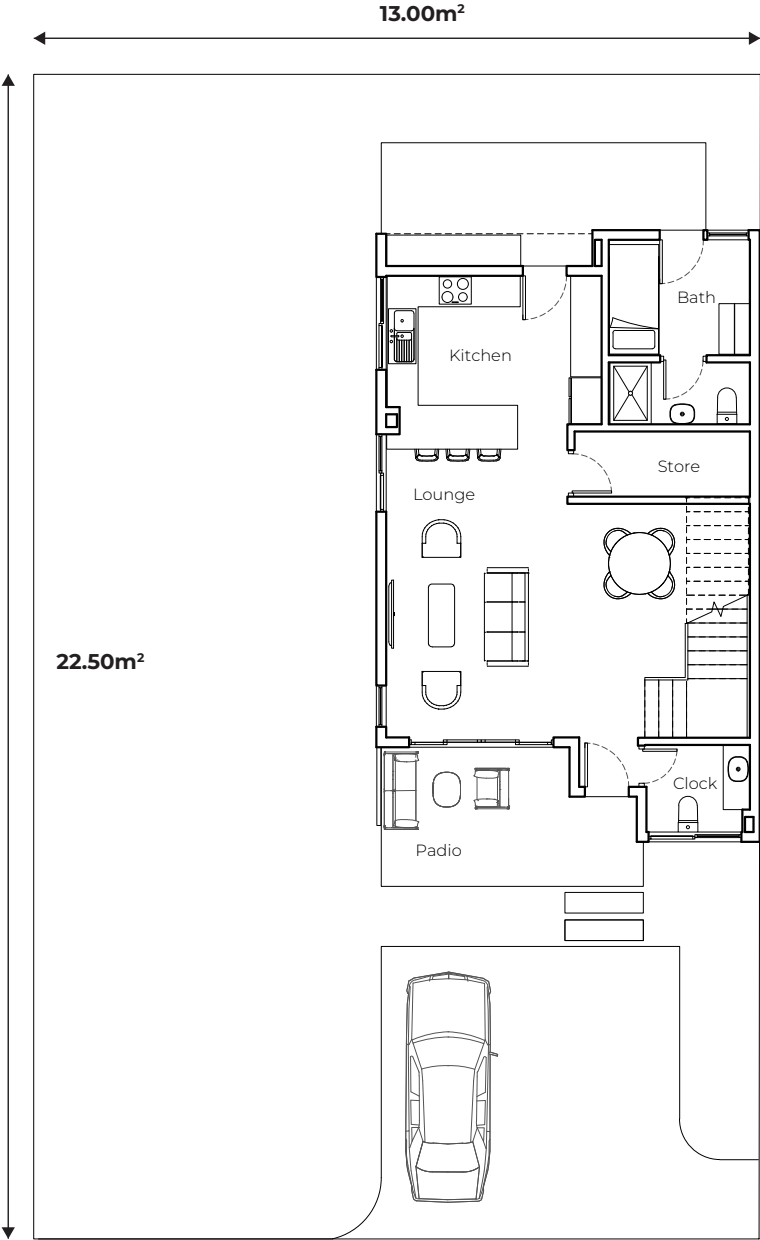
Ground Floor (with Domestic Staff Quarters)



THREE BEDROOM TOWNHOMES (176m<sup>2</sup>)



First Floor






Plot Size - 292.5m<sup>2</sup>  
Garden Area - 150m<sup>2</sup>



# Four Bedroom Townhomes

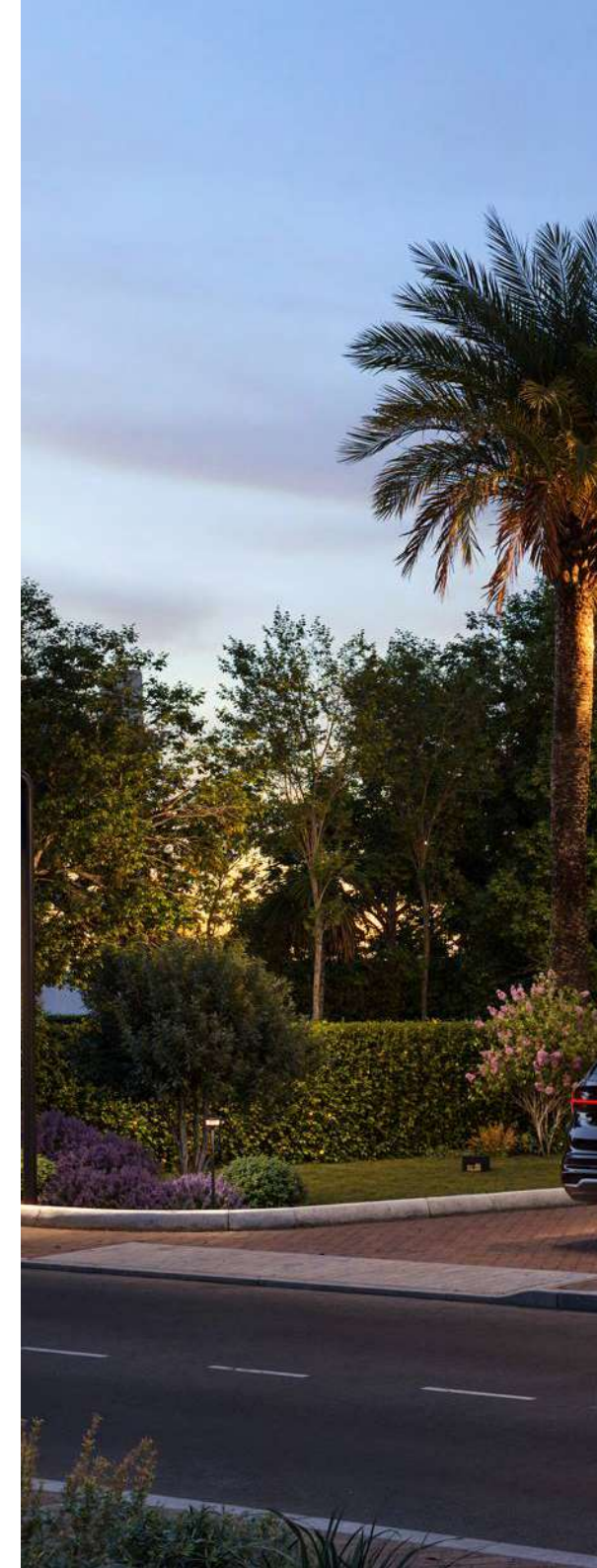
224m<sup>2</sup> / 2,411 sq. ft.

-  4 Bedrooms
-  4.5 Bathrooms
-  2 Car Park

A beautifully designed residence offering expansive living spaces and a private garden, ideal for seamless indoor–outdoor entertaining.

For added flexibility, each home provides the option of a second kitchen (Scullery) or Domestic Staff Quarters (DSQ) with en-suite facilities.

Enjoy unmatched value with private gardens up to **50% larger than competing developments**, redefining outdoor living, exclusivity, and space for your family.





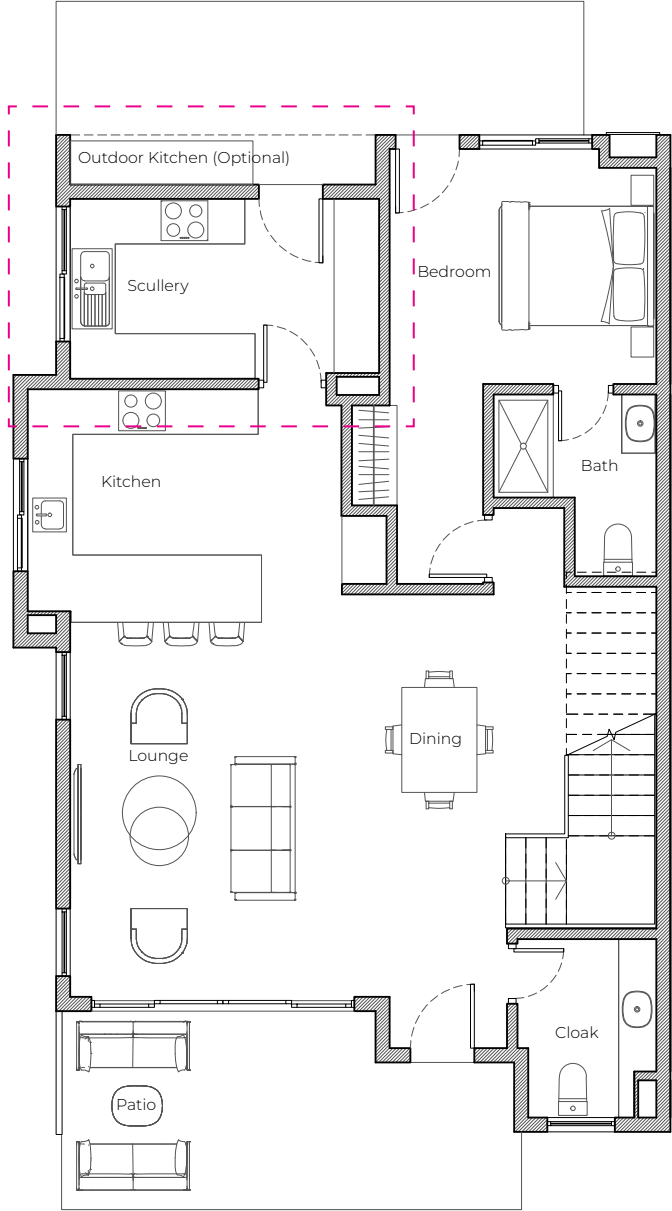


19

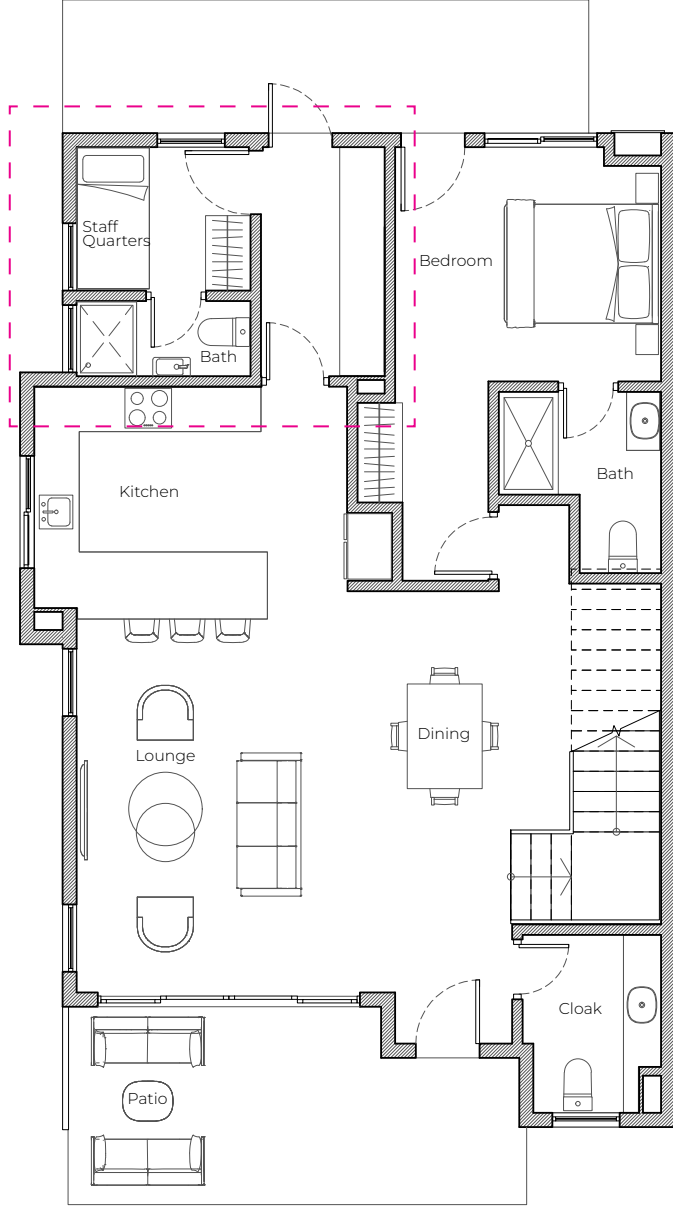
20



FOUR BEDROOM TOWNHOMES (224m<sup>2</sup>)



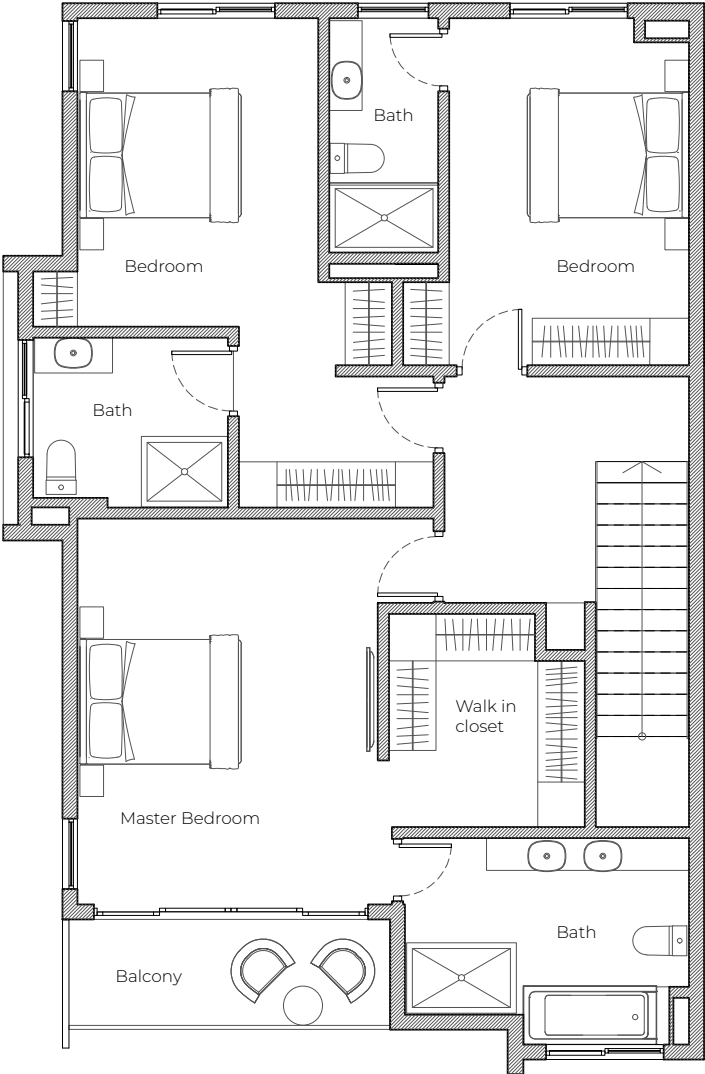
Ground Floor (with Scullery)



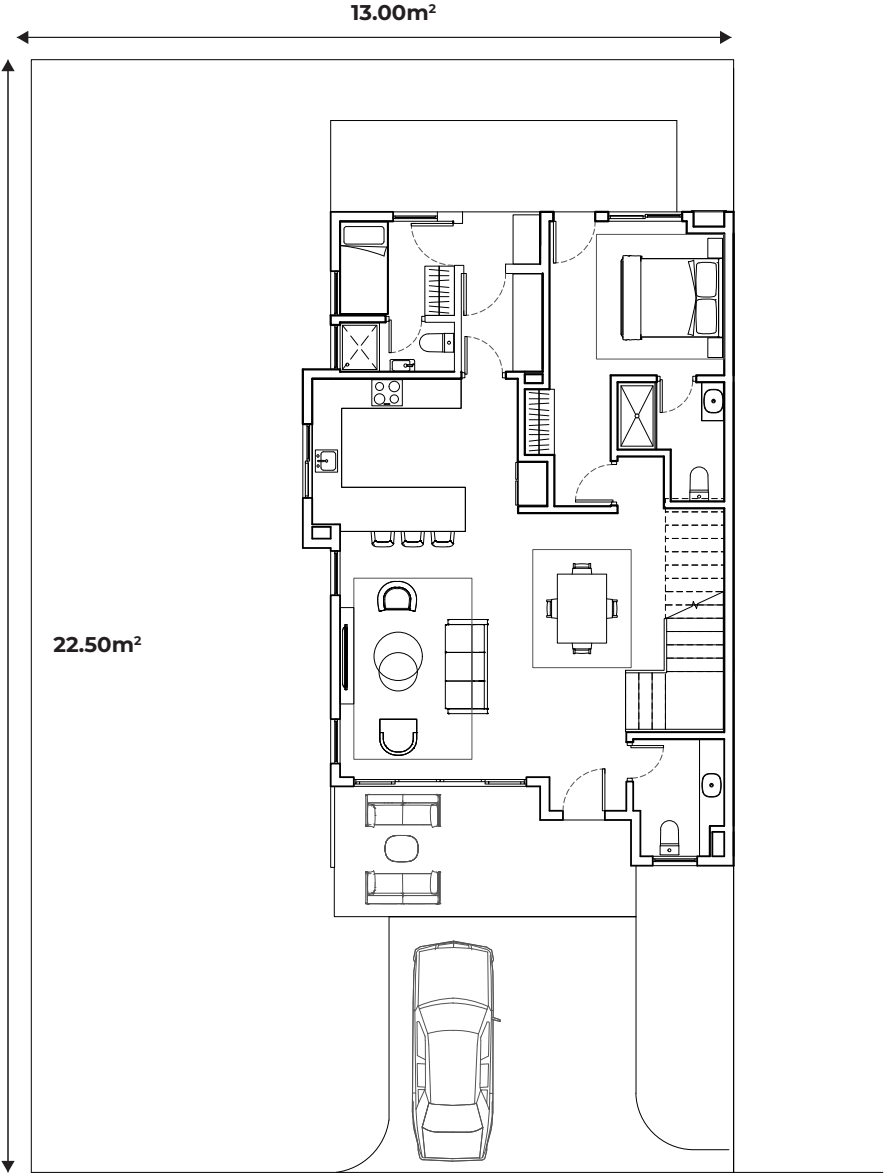
Ground Floor (with Domestic Staff Quarters)



FOUR BEDROOM TOWNHOMES (224m<sup>2</sup>)



First Floor



Plot Size - 292.5m<sup>2</sup>  
Garden Area - 135m<sup>2</sup>







20





# Four Bedroom Detached Villa

**244m<sup>2</sup> / 2,626 sq. ft.**

-  4 Bedrooms
-  4.5 Bathrooms
-  2 Car Park

Step into a world of refined elegance and contemporary sophistication. These exclusive 4-bedroom detached townhomes are a masterful expression of modern luxury, featuring striking architectural design, premium finishes, and expansive living spaces.

Each residence is nestled within a generous private garden, offering a serene sanctuary that seamlessly connects to a beautifully landscaped central park. Enjoy a curated selection of upscale family amenities designed to elevate everyday living where tranquility, style, and comfort converge.

This is more than a home. It's a lifestyle defined by grace, space, and timeless appeal.

**Property Area: (435m<sup>2</sup>)**

**Garden Area: (255m<sup>2</sup>)**



- Available October 2026**

Central Boulevard

Gatehouse

Show House

## Phase 1A

- Estimated from February 2026
- Estimated from July 2026
- Estimated July 2027 to October 2027
- Estimated July 2028 to October 2028



# Our Promise to You

At Akaya by Trasacco, we dedicate time and care to every stage of designing, planning, and building your new home. Our commitment is built on trust, quality, and exceptional service.



## **BUILDING QUALITY COMMUNITIES**

We create thriving neighbourhoods, not just houses but places where families can flourish.



## **UNCOMPROMISING QUALITY**

Our experienced team uses only the highest-quality materials to ensure your home is built to last.



## **SUSTAINABLE LIVING**

Sustainability lies at the heart of everything we do. From eco-friendly construction methods to enhancing biodiversity with trees, landscaped gardens, and green open spaces, we build responsibly for future generations.



## **KEEPING YOU INFORMED**

We provide regular updates throughout the building process, giving you peace of mind every step of the way.



## **READY WHEN PROMISED**

Your home will be fully complete before handover. After you move in, we follow up at set intervals within the first 12 months to ensure everything meets your expectations.



## **DEDICATED CUSTOMER CARE**

Our customer service team is here for you at every stage, from your first inquiry to moving in and beyond.

**With over 30 years of experience, Trasacco is a name you can trust. We don't just build homes, we build confidence, security, and long-lasting value.**



# A Prized Location

This combination of strong rental demand, capital appreciation, and premium amenities makes Akaya a rare opportunity in Accra's growing real estate market.

For tailored investment insights and detailed financial projections, please speak with one of our Sales Executives.



The Perfect Balance



Flexible Investment Options



Capital Appreciation



Tenant Appeal




High Return on Investment



  
Peduase  
Valley Resort

  
Oyarifa Mall

  
Elinesis WaterPark  
and Lesiure Centre


  
AnC Mall

  
Accra Mall

  
UGMC  
University of Ghana  
Medical Centre

  
37 Military  
Hospital

  
Legon University  
Campus

  
Kotoka International  
Airport





# Development Partners

Developers: Trasacco Properties Limited  
Contractor: Micheletti & Co.  
Architect: Boogertman + Partners/Insite Architects & Interior Designers

**Akaya**  
by TRASACCO

**+233 536 413 546**  
[sales@akayabytrasacco.com](mailto:sales@akayabytrasacco.com)  
[www.akayabytrasacco.com](http://www.akayabytrasacco.com)



Scan for our  
office location

This brochure neither constitutes an offer nor are its contents to be considered as representing statements of fact.  
The data should be considered for information purposes only and is subject to change.